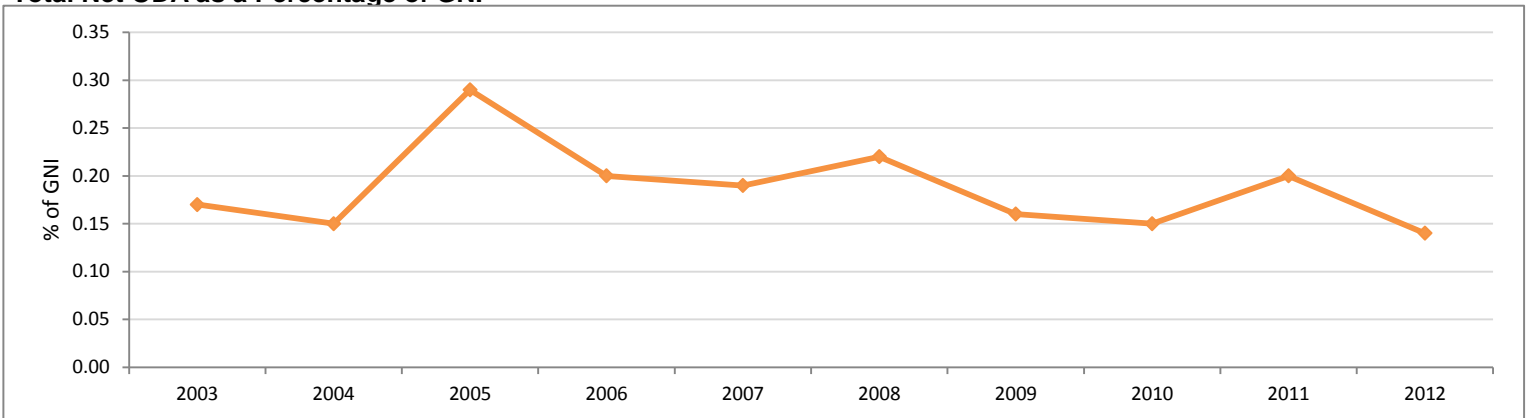


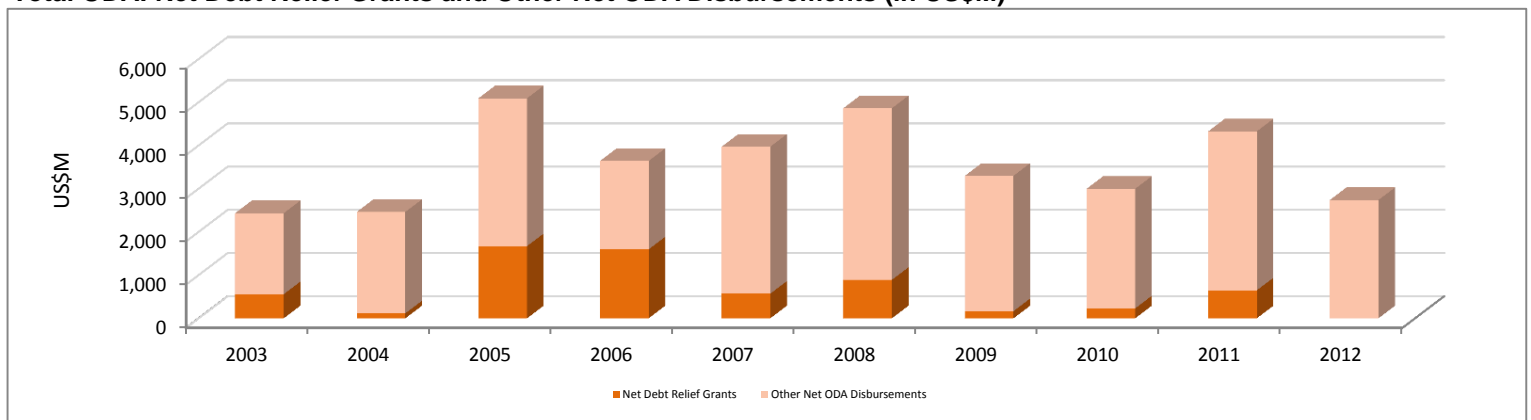
Italy - OECD/DAC Data

Source: OECD/DAC Database by Calendar Year (as of 03/26/2014) unless noted. Data not yet available for 2012 are shown as 0.

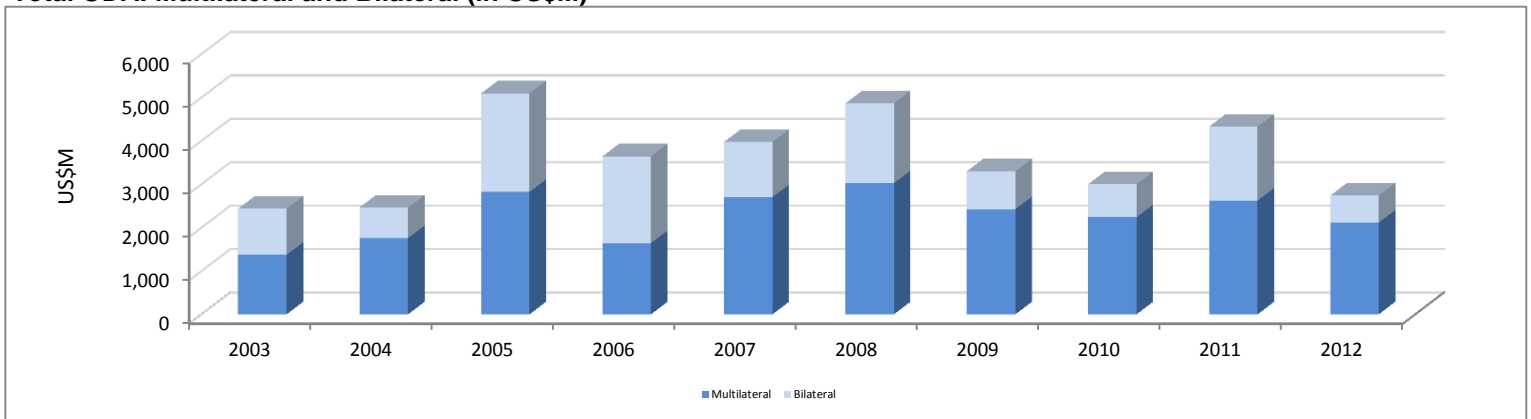
Total Net ODA as a Percentage of GNI



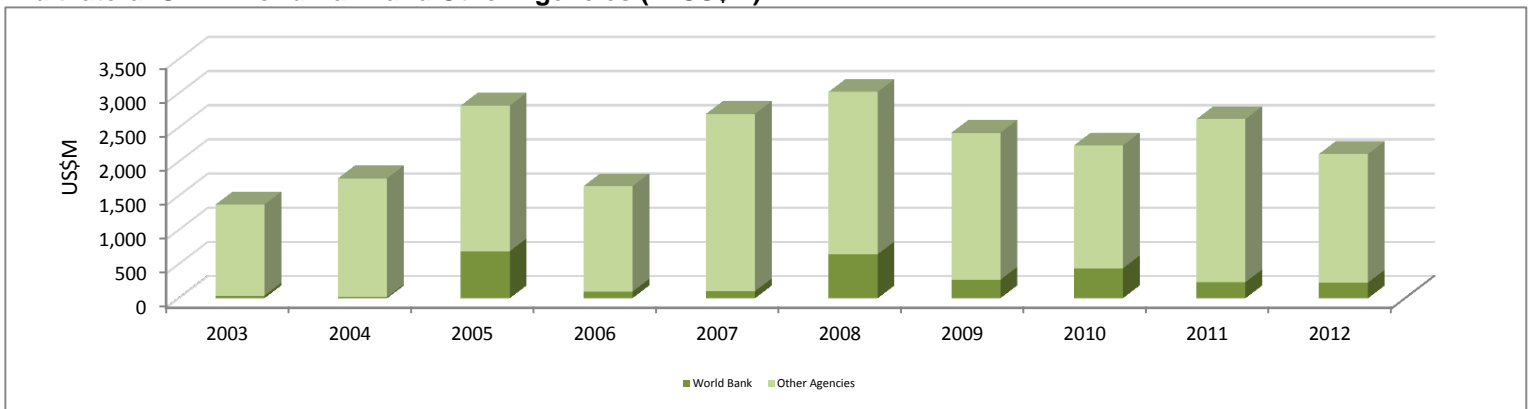
Total ODA: Net Debt Relief Grants and Other Net ODA Disbursements (in US\$M)



Total ODA: Multilateral and Bilateral (in US\$M)



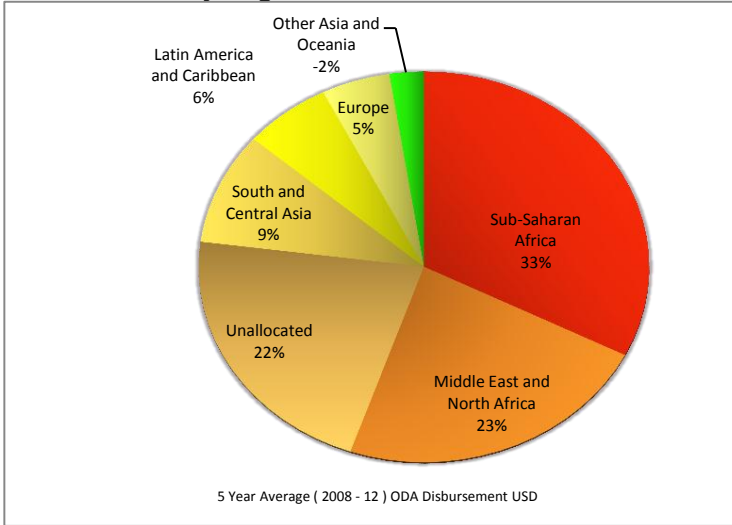
Multilateral ODA: World Bank and Other Agencies (in US\$M)



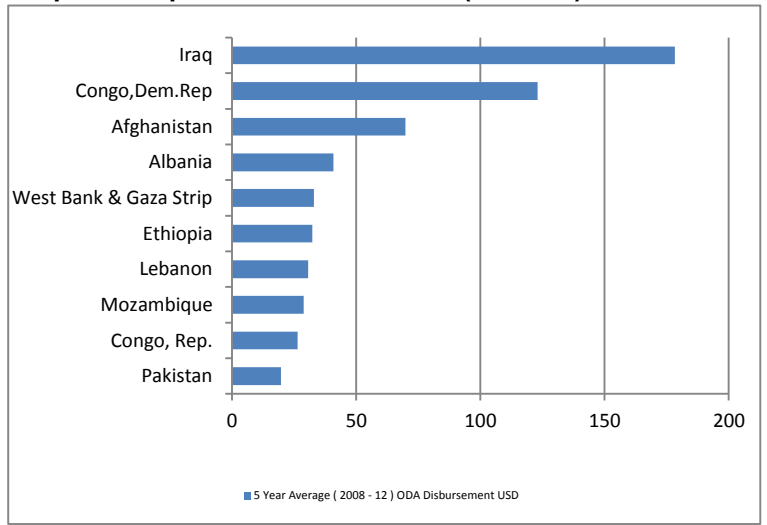
Italy - OECD/DAC Data

Source: OECD/DAC Database by Calendar Year (as of 03/26/2014) unless noted. Data not yet available for 2012 are shown as 0.

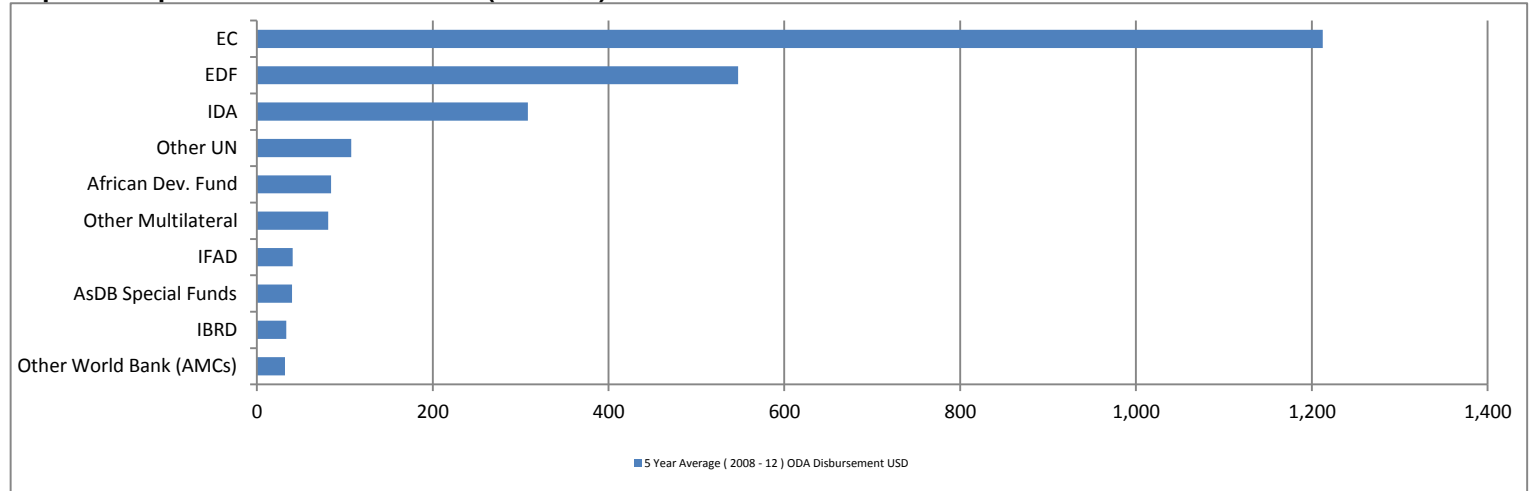
Bilateral ODA by Region in %



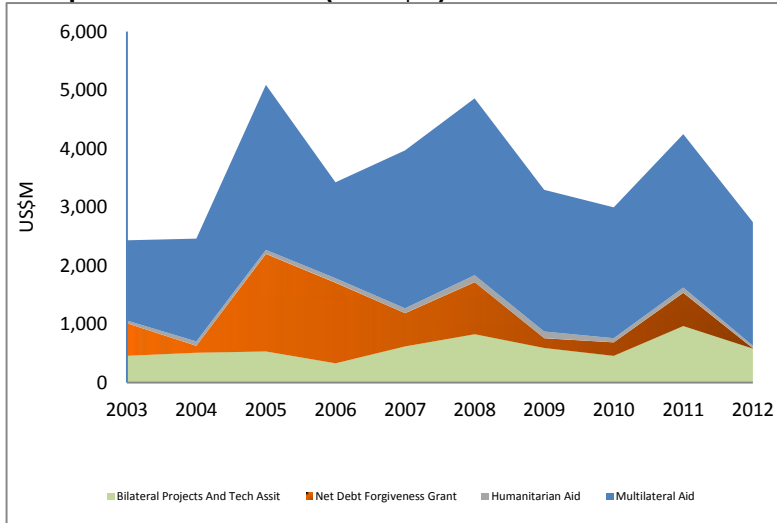
Top 10 Recipients of Bilateral ODA (in US\$M)



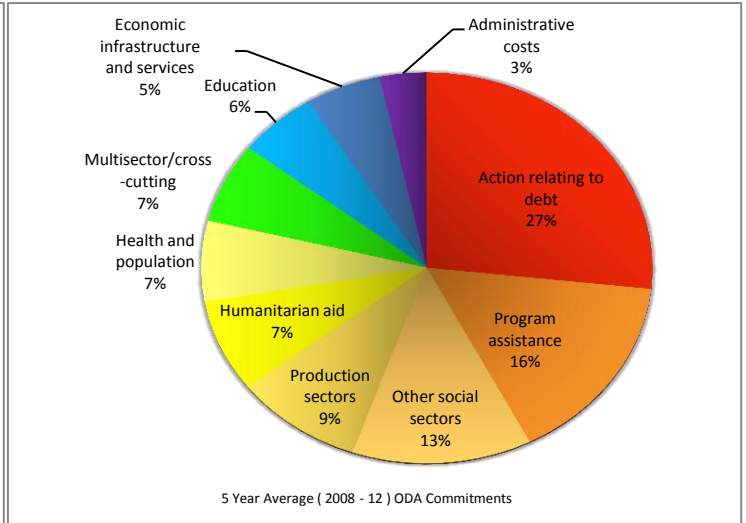
Top 10 Recipients of Multilateral ODA (in US\$M)



Components of Net ODA (in US\$M)



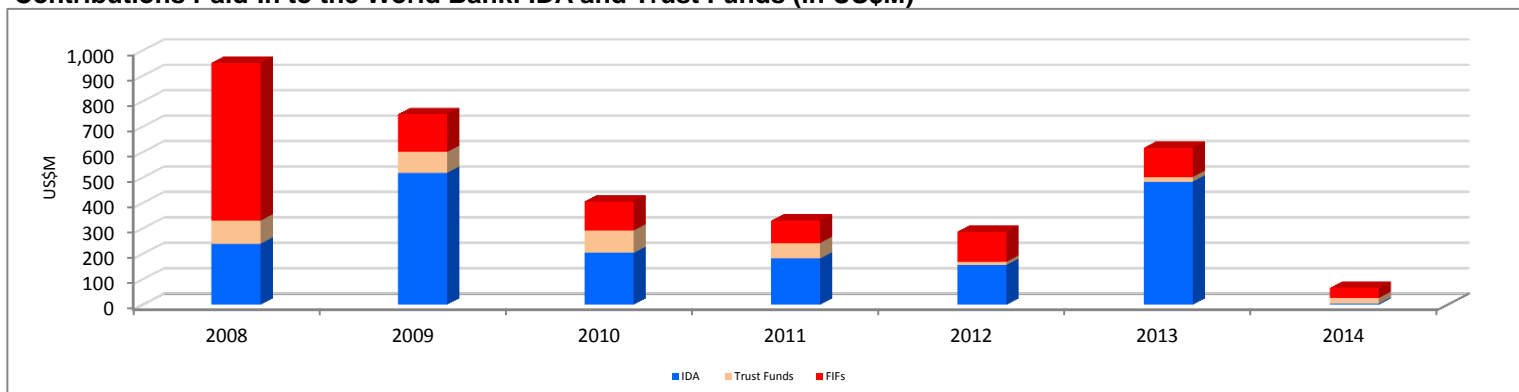
Sector Allocable Aid in %



Italy - World Bank Data

Source: World Bank Contributions Paid-In (Cash + Notes) by Fiscal Year - data as of 05/07/2014 unless noted

Contributions Paid-In to the World Bank: IDA and Trust Funds (in US\$M)



IBRD Participation

Shares

Subscribed Shares	50,952
Unsubscribed Shares	12,420
% of unsubscribed voting power	2.65
Ranking	9

Voting Power

Number of Votes	51,552
% of Total Voting Power	2.54

Paid-in (in US\$M)

Subscribed Amount	6,146.60
Amount Paid in	379.40
Amt Subject to Call	5,767.20

Source: World Bank Annual Report (as of 06/30/2013)

Contributions to IDA Replenishments (in Hist US\$M)

Replenishment	Basic Amt	Basic Share %	Suppl
ID00	21.91	2.25	0.00
ID01	36.19	4.03	0.00
ID02	58.34	4.07	0.00
ID03	116.68	4.01	0.00
ID04	181.35	4.02	0.00
ID05	295.90	3.87	0.00
ID06	462.00	3.84	0.00
FY84	89.33	4.52	0.00
SFA	221.70	12.04	0.00
ID07	387.00	4.26	0.00
ID08	609.50	5.21	90.50
ID09	779.94	5.30	29.35
ID10	952.82	5.30	0.00
INTF	183.15	4.02	0.00
ID11	333.65	4.35	0.00
ID12	439.08	3.80	30.60
ID13	481.67	3.80	0.00
ID14	695.23	3.80	90.66
ID15	1,032.03	3.80	146.50
ID16	689.29	2.23	116.37
MDRI	1,406.01	3.95	0.00
Total Contribution	9,472.77		503.98

Amounts for HIPC costs and arrears clearance, if any, are shown as supplemental.

Suppl amts also include credit accelerations. MDRI amt represents latest cost update.

IDA Participation

Voting Power

Number of Votes	573,632
% of Total Voting Power	2.43

% of Total Donor Contributions

ID15 Share	3.80
ID16 Share	2.23
MDRI Share	3.95

Source (Votes) : WB Corporate Secretariat (as of 04/28/2014)

Contributions to GEF Repl (in Hist US\$M)

Replenishment	Contribution	Basic Share %
GF00	89.08	0.00
GF01	106.00	5.30
GF02	90.50	4.39
GF03	105.22	4.39
GF04	107.75	4.39
GF05	127.02	2.89
Total Contribution	625.57	

HIPC (in US\$M)

Total Contribution	98.72
Contribution Received	98.72
Outstanding Contribution	0.00

GFATM (in US\$M)

Total Contribution	1,050.06
Contribution Received	1,008.26
Outstanding Contribution	41.79

IFFIM (in US\$M)

Total Contribution	684.32
Contribution Received	262.89
Outstanding Contribution	421.43

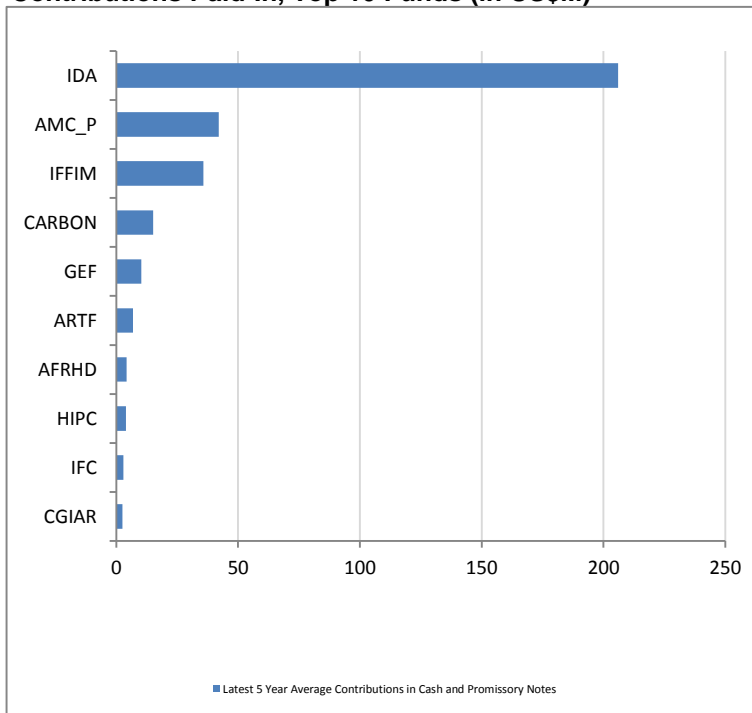
AMC_P (in US\$M)

Total Contribution	625.61
Contribution Received	316.50
Outstanding Contribution	309.10

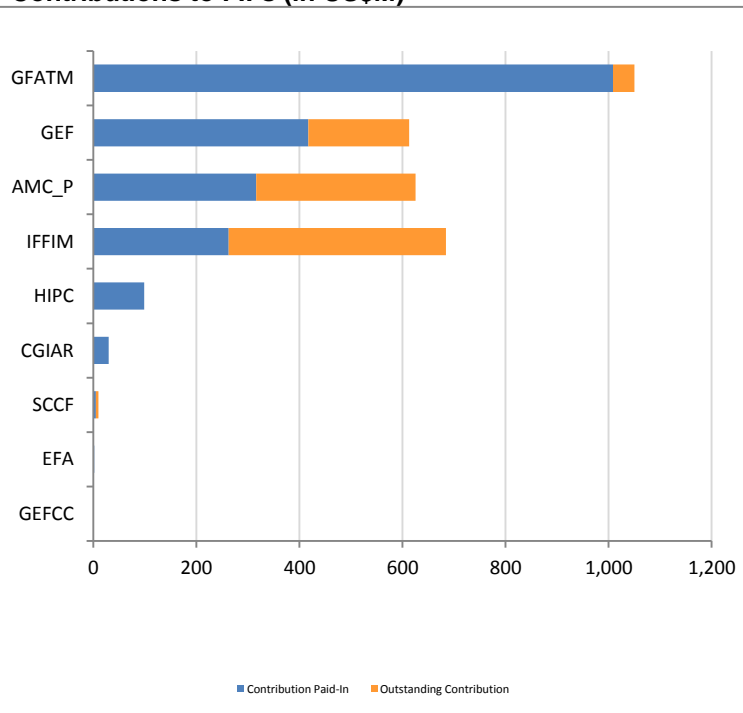
Italy - World Bank Data

Source: World Bank Contributions Paid-In (Cash + Notes) by Fiscal Year - data as of 05/07/2014 unless noted

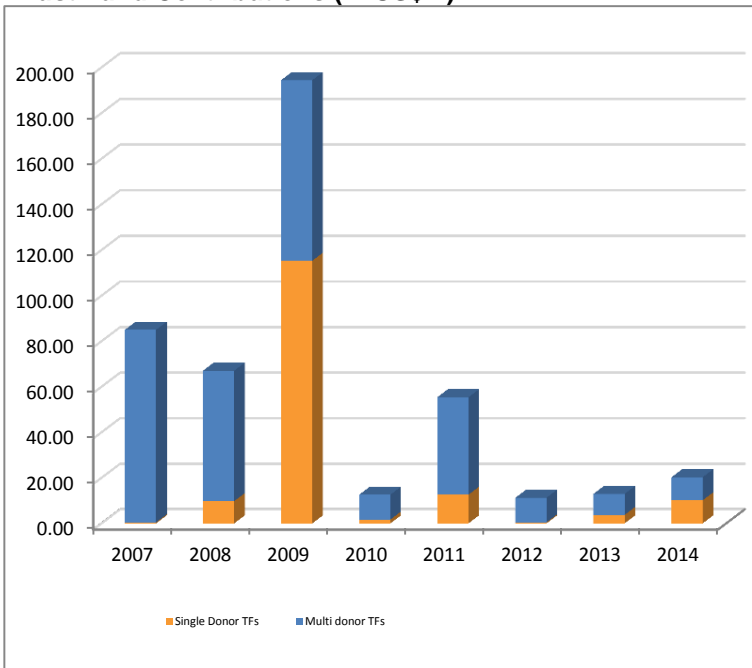
Contributions Paid-In, Top 10 Funds (in US\$M)



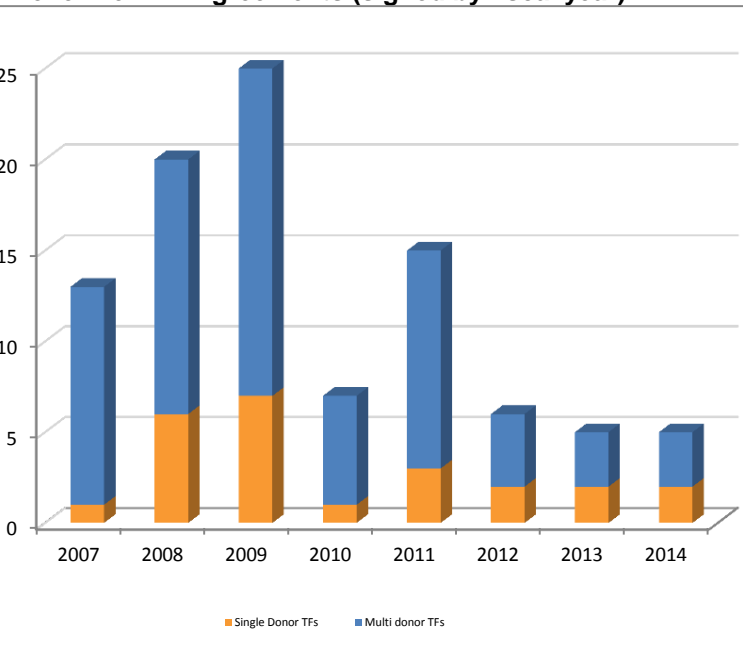
Contributions to FIFs (in US\$M)



Trust Fund Contributions (in US\$M)



No. of New TF Agreements (signed by fiscal year)



Contributions Paid-In to World Bank Funds by Fiscal Year in US\$M (Source: World Bank)

World Bank Funds	FY09	FY10	FY11	FY12	FY13	FY14
IDA	518.55	203.52	181.52	156.99	484.10	4.18
AMC_P	105.92	52.31	52.42	52.70	53.17	0.00
IFFIM	33.84	33.77	35.26	37.81	34.66	36.97
CARBON	15.45	53.50	18.92	0.44	2.22	0.47
ARTF	34.07	5.34	5.57	7.79	7.48	8.20
Transfers between Trust Funds	-21.29	-6.48	-20.22	-19.68	-11.87	-16.02
Total	749.33	406.48	330.58	287.56	617.29	66.65